

We produce fluid power **solutions**

ARGO
HYTOS
A Voith Company



Product Overview

Fluid & Motion Control
Filter Solutions & Tank Systems
Sensors & Measurement
Fluid Management



Content

Our products at a glance

About us

About ARGO-HYTOS	4
Application Engineering	5

Fluid & Motion Control

Directional Control Valves, Proportional Valves, Bankable modular valve assembly	7
Modular Valves, Screw-in Directional Valves, Pressure, Flow, Check and Motion Control Valves	8
Explosion Proof Valves, Electronic Controllers, Hydraulic Drives	9
Mobile Vehicles Suspensions and Boom Control Systems, Hydraulic Integrated Circuits, Power Units.....	10
Power Pack - Dock Levelers, Connecting Plates, Manifolds, Accessories	11

Filter Solutions & Tank Systems

Suction Filters, Built-in Suction Filters, Return Filters, Return-Suction Filters	13
Pressure Filters, High Pressure Filters, High Pressure Safety Filters, Stainless Steel High Pressure Filters.....	14
Filling and Ventilating Filters, Desiccant Breathers, Clogging Indicators, Oil Level Gauges with Thermometer, Oil Level Dipsticks	15
Customized Filter Solutions, Filter Elements.....	16
Injection Molded Plastic Tanks, HIT - Hybrid Integrated Tank®, Quick-Connect Hose Connection System	17

Sensors & Measurement

Portable Particle Counters, Stationary Particle Monitors, Lubrication Condition Sensors.....	19
Data Handling, Software	20

Fluid Management

Off-line Filters, Off-line Filter Units.....	22
Oil Service Units, Dewatering Units, Compact Filter Pack	23

A strong brand in fluid technology

We make your products better. Worldwide.



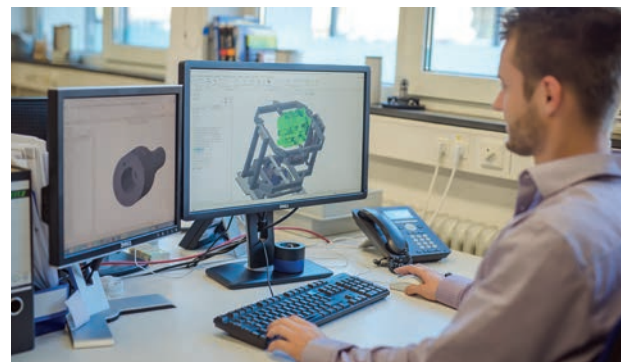
As a components and system supplier ARGO-HYTOS is an essential part in the supply chain of the world market leaders when it comes to mobile working machinery and mechanical engineering. ARGO-HYTOS has established an international network of production and distribution companies to provide the full support our successful global customers are accustomed to. We offer customer-oriented added value and expertise at the customers' location. With modern technical challenges becoming more complex as time goes on, it is vital to find system partners who can offer an integrated approach supported by outstanding experience, which they can contribute to projects and offer solutions for fluid power technology.

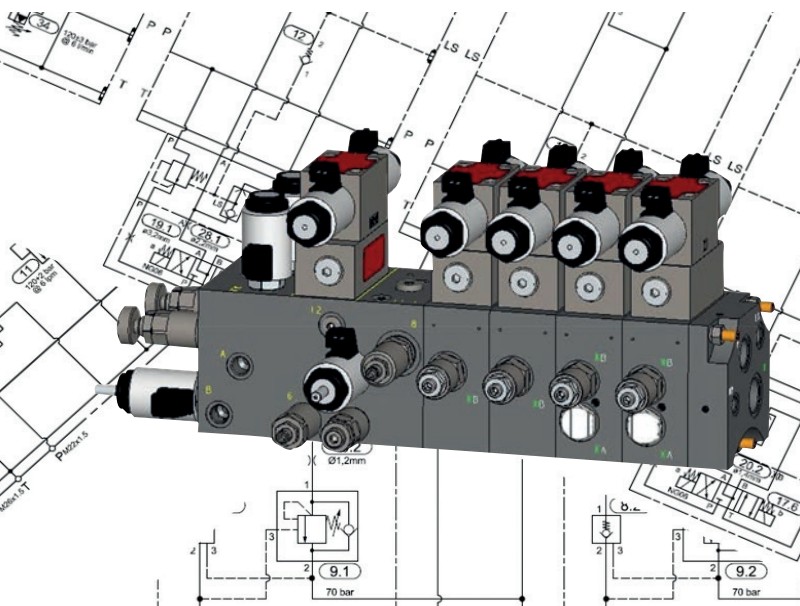
The ARGO-HYTOS Group is a global supplier of hydraulic system solutions. With around 1,600 employees and more than 75 years of experience in fluid & motion control and filtration, ARGO-HYTOS continues to set new standards in the hydraulics industry. Especially in mobile hydraulics the company has become an innovation leader.

We view ourselves as an international partner implementing innovative and individually designed system solutions together with our customers. The basis for this is a wide modular product range which can be flexibly expanded to customized solutions. Thereby we draw on our entire wealth of know-how and give new impetus to modern fluid power technology, time and again. ARGO-HYTOS owns a number of patents and in many cases has set new standards in its industry.

The ARGO-HYTOS Group owns production companies in Germany, the Czech Republic, India, China, Poland, Brazil as well as in the USA and is also represented through numerous international sales entities worldwide. In August 2022, ARGO-HYTOS has become part of the Voith Turbo division within the Voith Group.

ARGO-HYTOS aims to make a substantial contribution to improve customer products and sustainably ensure significant customer benefit.





What APPLICATIONS stands for ...

- ... We develop, across all sites, system solutions for a **wide range of applications**: these solutions are based on combinations of standard and customized components, of all products designed and produced within the ARGO-HYTOS Group.
- ... We supplement these system solutions with **innovative, tailored products, based on technologies known and proven within the ARGO-HYTOS Group**.
- ... Together with our customers we develop system solutions that reflect the customers' demands regarding purchasing, production and sales - all the way to the aftermarket.
- ... More and more, **total cost of ownership and sustainability** are selling points for our customers which we support with our component and system solutions tailored to regional market needs.
- ... **Manufacturing expertise in valve, filtration, sensor and drive technology** enables us to find competent and flexible solutions.

What APPLICATIONS Can Do for You ...

- ... You determine and define functionality – we provide possible solutions.
- ... You want to redesign, modernize or adapt your machine to a regional market – we have the system knowledge, the components and the project planning competence to help you realize it.
- ... We combine for you local and central value-added shares in order to meet the highest requirements with regard to function safety, reliability and cost effectiveness.
- ... We support your development team in projects from initial inquiry up to the start of series production.
We maintain and observe highest internal standards in the processing of international projects in global core markets thanks to competent local contact persons and applications experts in our application centers.

We speak the language of our customer

An understanding of the application and the functionality is the prerequisite for efficient and targeted solution finding.

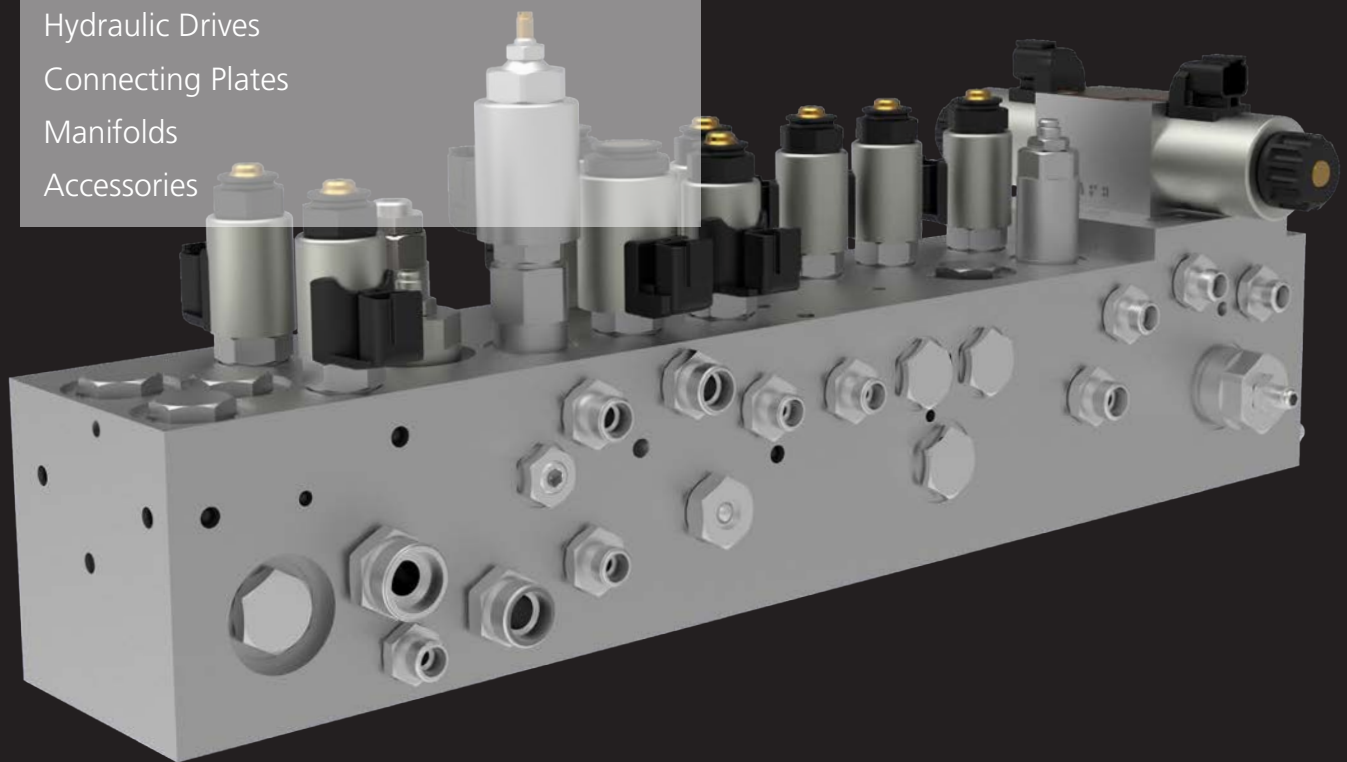
Our global sales organization provides the local communication and implementation platform, while the application engineering department contributes its technical and application expertise to the solution finding process.

Thanks to our extensive application know-how, we can assess functionalities and interactions and provide customers with comprehensive advice on their complex tasks.

We make your products better. **Worldwide.**



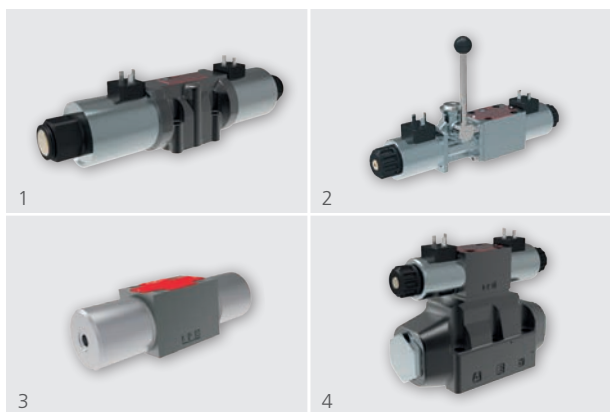
Directional Control Valves
Proportional Valves
Bankable Modular Valve Assembly
Modular Valves
Screw-in Directional Valves
Pressure, Flow, Check and
Motion Control Valves
Explosion Proof Valves
Hydraulic Integrated Circuits
Hydraulic Power Units
Application Solutions with Controls
Electronic Controllers
Hydraulic Drives
Connecting Plates
Manifolds
Accessories



System Solutions

You determine and define functionality –
We provide possible solutions.

Directional Control Valves

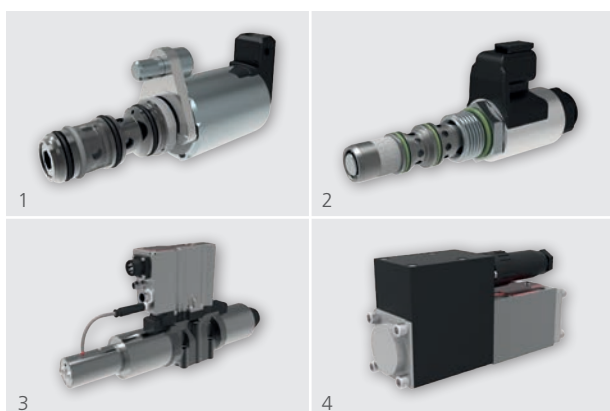


1 RPE4-10; 2 RPER3-06; 3 RPH3-06; 4 RNEH5-16

Features

- › Nominal flow rate: up to 600 l/min (158 gpm)
- › Operating pressure: up to 350/420 bar (5100/6100 psi)
- › Nominal size: CETOP 02, 03, 05, 07, 08
- › Voltage: 12, 14, 24, 27, 48, 205 V DC
24, 120, 230 V AC (50/60 Hz)
- › Connector plug: DIN/EN, Junior Timer, Deutsch
- › IP rating (EN 60529): 65, 67, 69K
- › Surface protection (ISO 9227): up to 520 h
- › UL, CSA certification
- › Special variants on request

Proportional Valves

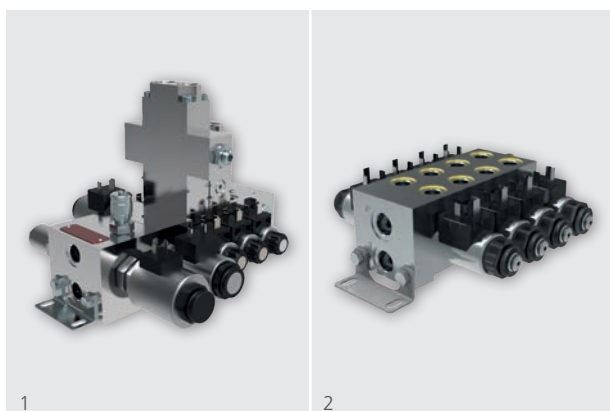


1 PP2P3-W3; 2 SP4P1-B4; 3 PRM9-10; 4 PRL2-06

Features

- › Nominal flow rate: up to 140 l/min (37 gpm)
- › Operating pressure: up to 350 bar (5100 psi)
- › Function: pressure relief/reducing and flow control
- › Type: CETOP, screw-in and slip-in cartridge
- › Voltage: 12, 14, 24, 27, 48, 205 V DC
24, 120, 230 V AC (50/60 Hz)
- › Connector plug: DIN/EN, Junior Timer, Deutsch
- › IP rating (EN 60529): 65, 67, 69K
- › Surface protection (ISO 9227): up to 520 h
- › CANopen connectivity possible / digital or analog on-board electronics / special variants on request

Bankable modular valve assembly

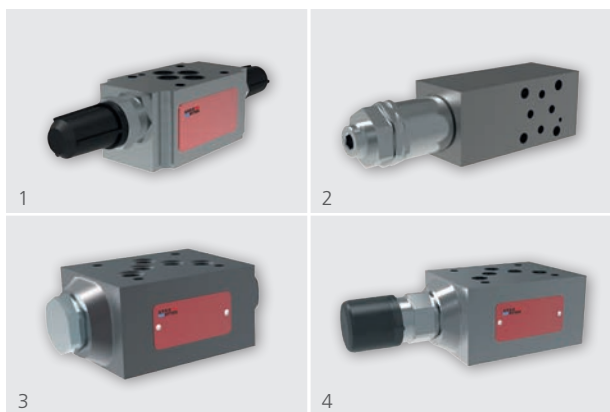


1 System Solutions; 2 RPEK

Features

- › Nominal flow rate: up to 20 l/min (5 gpm) - per section
- › Operating pressure: up to 250 bar (3600 psi)
- › Port sizes: G $\frac{1}{4}$, SAE6
- › Voltage: 12, 14, 24, 27 V DC
- › Connector plug: DIN/EN, Junior Timer, Deutsch
- › IP rating (EN 60529): 65, 67, 69K
- › Surface protection (ISO 9227): up to 520 h
- › Compact design, modular and space saving solution
- › Special variants on request

Modular Valves: CETOP

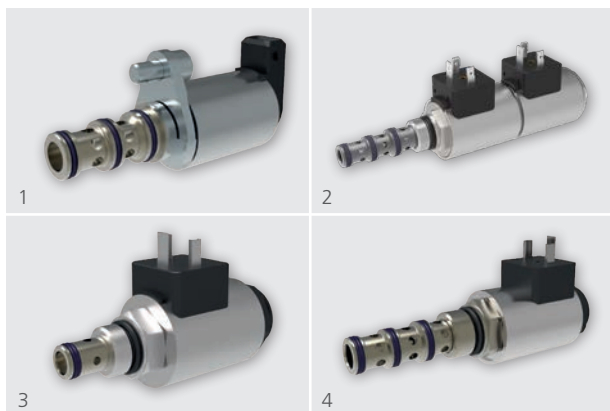


1 2VS3-06; 2 VPP2-04; 3 VRJ3-10; 4 VSO3-10

Features

- › Nominal flow rate: up to 100 l/min (26 gpm)
- › Operating pressure: up to 350 bar (5100 psi)
- › Nominal size: CETOP 02, 03, 05
- › Function: pressure relief/reducing, check and flow control
- › Surface protection (ISO 9227): up to 520 h
- › Various adjusting options

Screw-in Directional Valves



1 PD2E-W3; 2 PD2E-W3A; 3 SD2E-A2; 4 SD2E-B4

Features

- › Nominal flow rate: up to 150 l/min (40 gpm)
- › Operating pressure: up to 420 bar (6100 psi)
- › Type: screw-in and slip-in cartridge
- › Voltage: 12, 14, 24, 27 V DC
- › Connector plug: DIN/EN, Junior Timer, Deutsch
- › IP rating (EN 60529): 65, 67, 69K
- › Surface protection (ISO 9227): up to 520 h

Pressure, Flow, Check and Motion Control Valves

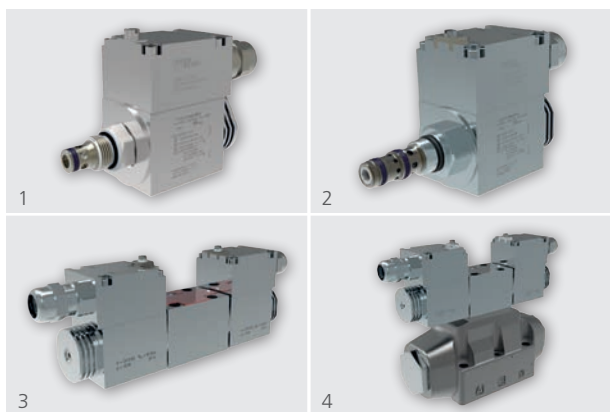


1 SD2H-LA3; 2 SO5A-BP3; 3 SP4A-B3; 4 SR1A-B2

Features

- › Nominal flow rate: up to 150 l/min (40 gpm)
- › Operating pressure: up to 350/420 bar (5100/6100 psi)
- › Function: pressure relief/reducing and flow control, check and motion control
- › Surface protection (ISO 9227): up to 520 h
- › Various adjusting options

Explosion Proof Valves



1 SD1EX-A2; 2 SD1EX-A3; 3 RPEX3-06; 4 RNEXH5-16



Features

- › Nominal flow rate: up to 600 l/min (158 gpm)
- › Operating pressure: up to 350 bar (5100 psi)
- › Type: CETOP and screw-in cartridge
- › Function: directional, proportional, flow and pressure control valve
- › Voltage: 12, 24, 48, 110 V DC
110, 230 V AC (50/60 Hz)
- › Acc. to directive ATEX 34/2014/EC, IECEx
- › Local certifications: EAC, Australia & NZ, CCC, PESO
- › Group: I (mining), IIG (gases), IID (dust)
- › EPL level: Mb, Gb, Db
- › Temperature class: T4, T5, T6
- › Various manual overrides

Electronic Controllers



1 EL7; 2 Electronic Control Unit; 3 Digital Controller

Features

- › Amplifier for direct assembly on the valves
- › Digital or analog amplifier electronics
- › Plug-in or rail mounting amplifiers
- › Easy-to-use adjustments
- › User friendly software

Hydraulic Drives



1 GP1; 2 GP2L; 3 GP3; 4 RCA

Features

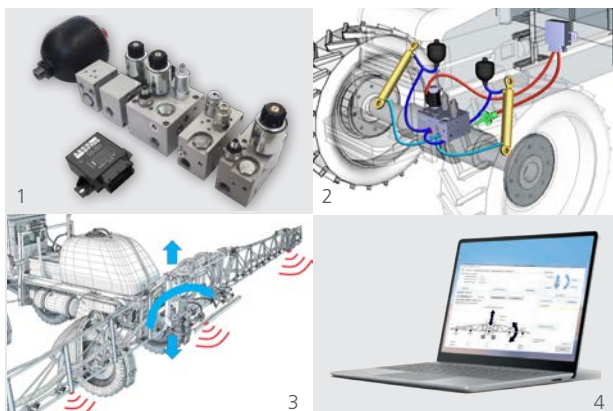
Gear Pumps

- › Displacement: up to 0.18-100 cm³/rev (cc/rev)
- › Operating pressure: up to 320 bar (5100 psi)
- › International standard flanges acc. to SAE, ISO, DIN, GOST
- › High quality aluminum alloys
- › High volumetric efficiency up to 98%
- › Lifetime 3000 working hours

RCA

- › Push to pressurize
- › Simple and reliable design
- › Built-in pressure and suction check valves
- › Handle beam can be rotated by 360°

Mobile Vehicles Suspensions and Boom Control Systems



1 System components; 2 MHPs / MSC;
3 SHC; 4 PC - parameterization software

Hydro-Pneumatic Suspension System (MHPs/MSC)

- › Improving suspension performance
- › Easy and fast adaptation to the application
- › Reduces vibrations in axle, wheel, cabin and payload
- › Standard modules easily adaptable to specific applications
- › Flexible configurations of ECU

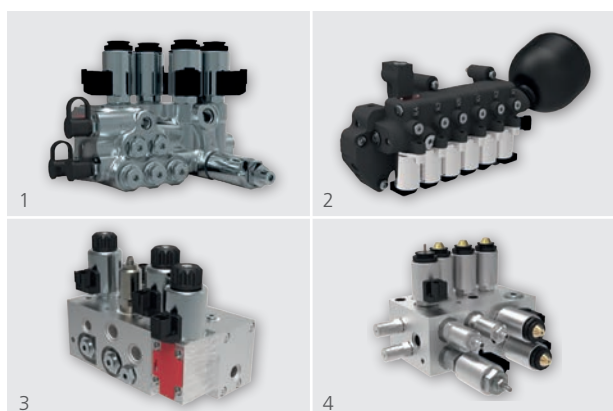
Sprayer Height Control System (SHC)

- › Automatic height control of the spray boom
- › Usable with mechanical or hydropneumatic suspension
- › More accurate and economical spraying of agent

Control Panel - Service tool software

- › Easy and intuitive parameterization
- › Monitor and diagnostic functions

Hydraulic Integrated Circuits

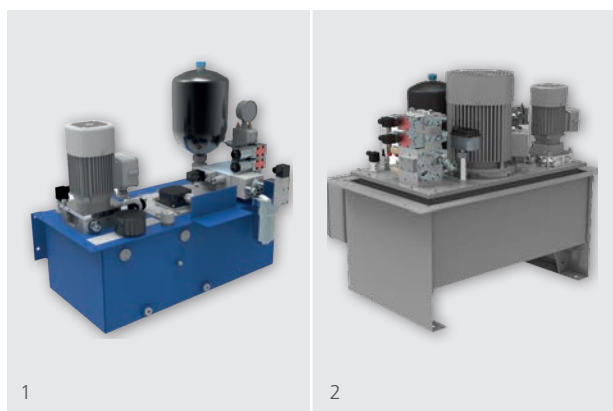


System Solution Blocks

Features

- › Nominal flow rate: up to 600 l/min (158 gpm)
- › Operating pressure: up to 420 bar (6100 psi)
- › Customized systems and subsystems
- › Best solution and efficiency oriented design
- › Surface protection (ISO 9227): up to 520 h

Power Units

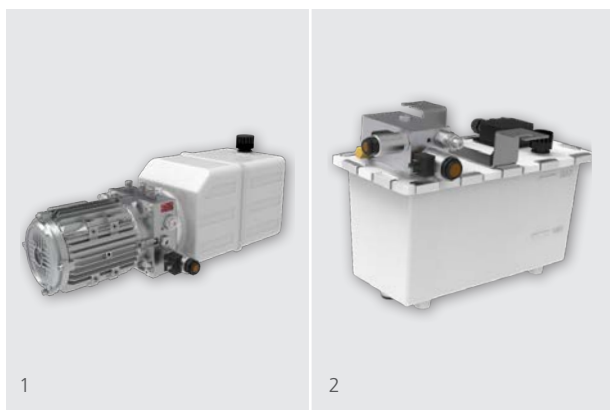


1; 2 Power Units

Features

- › Nominal flow rate: up to 50 l/min (13 gpm)
- › Operating pressure: up to 250 bar (3600 psi)
- › Tank capacity: up to 250 liters (66 gallons)
- › Electric Motor Types:
 - 1~110 V (50/60 Hz)
 - 1~230 V (50/60 Hz)
 - 3~400/460 V (50/60 Hz)
 - 12/24 V DC
- › Special variants on request

Power Pack - Dock Levelers

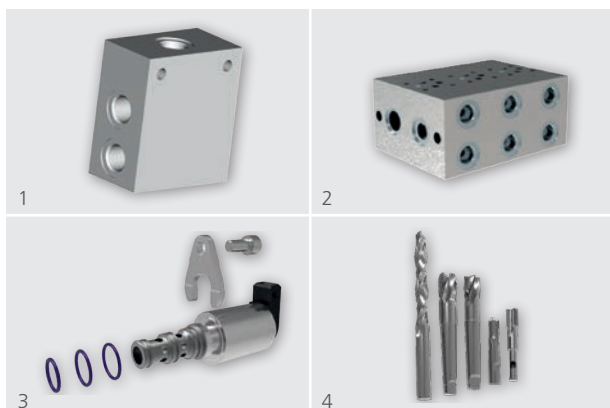


1; 2 Power Packs

Features

- › Nominal flow rate: typically 6 l/min (1.6 gpm)
- › Operating pressure: typically 200 bar (2900 psi)
- › Tank capacity: typically 10 liters (2.6 gallons)
- › Electric Motor Types: 3~400/460 V (50/60 Hz)
- › Several hydraulics circuits for customized projects

Connecting Plates, Manifolds, Accessories



1 SB; 2 DP; 3 SP; 4 SMT

Features

- › Operating pressure: up to 320 bar (5100 psi)
- › Base plates
- › Serial plates
- › Sandwich plates
- › Sub-plates
- › Blanking plates
- › Surface protection (ISO 9227): up to 520 h
- › Spare Parts
- › Screw-In Cartridge Cavity Manufacturing Tools

We make your products better. **Worldwide.**



Suction Filters
Built-in Suction Filters
Return Filters
Return-Suction Filters
Pressure Filters
High Pressure Filters
High Pressure Safety Filters
Stainless Steel High Pressure Filters
Filling and Ventilating Filters
Desiccant Breathers
Clogging Indicators
Oil Level Gauges with Thermometer
Oil Level Dipsticks
Customized Filter Solutions
Filter Elements
Injection Molded Plastic Tanks
HIT - Hybrid Integrated Tank®
Quick-Connect Hose Connection System

Filtration

Filter Solutions & Tank Systems -

Your success is our priority

Filtration

Suction Filters & Built-in Suction Filters



1 AS 080; 2 S0.0426; 3 SFL 025; 4 ES 075

Features

- › Nominal flow rate: up to 350 l/min (92 gpm)
- › Fineness: 100...280 µm(c)
- › Hose connection: 32...60.5 Ø
- › Connection: G½...G2½
-12 SAE, -20 SAE
- › Suction filters to be installed in the suction line of the pump. With thread or hose connection. For in-tank, side-tank and in-line mounting.
- › Many series in High Performance and Lightline version available.

Return Filters



1 D 170; 2 E 103; 3 E 222; 4 E 503

Features

- › Nominal flow rate: up to 900 l/min (238 gpm)
- › Operating pressure: up to 10 bar (145 psi)
- › Fineness: 5...100 µm(c)
- › Hose connection: Ø 17.5...Ø 20.5
- › Connection: G½...G2½
SAE 2...SAE 2½
-12 SAE... -24 SAE
- › In-line, tank-top mounting or for mounting in a separate return flow tank section, optionally with integrated replaceable ventilating filter [2 µm(c)], air separation or extension pipe and diffuser.
- › Many series in High Performance and Lightline version available.

Return-Suction Filters

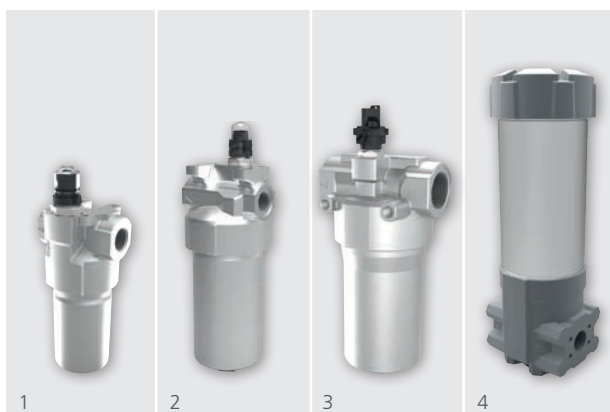


1 RST 084; 2 E 088; 3 E 198; 4 E 998

Features

- › Nominal flow rate: up to 850 l/min (225 gpm)
- › Operating pressure: up to 10 bar (145 psi)
- › Fineness: 10, 16 µm(c)
- › Connection: G¾...G1½
SAE 1½...SAE 2½
-12 SAE... -24 SAE
- › In-line or tank-top mounting, with boost pump connection (0.5 bar charge pressure) for hydrostatic drives.
- › Many series in High Performance and Lightline version available.

Pressure Filters

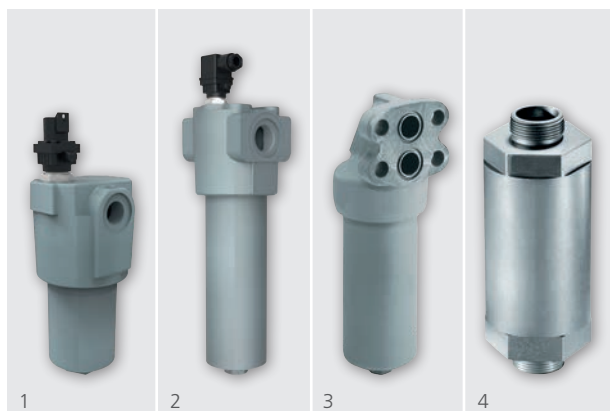


1 D 042; 2 D 072; 3 D 162; 4 FNL 1000

Features

- › Nominal flow rate: up to 2000 l/min (528 gpm)
- › Operating pressure: up to 100 bar (1450 psi)
- › Fineness: 5...30 µm(c)
- › Connection: G½...G2½
-8 SAE... -24 SAE
- › In-line mounting, optionally with electrical and / or optical clogging indicator.

High Pressure Filters & High Pressure Safety Filters



1 HD 049; 2 HD 172; 3 HD 414; 4 HD 081

Features

- › Nominal flow rate: up to 1000 l/min (264 gpm)
- › Operating pressure: up to 600 bar (8702 psi)
- › Fineness: 5...100 µm(c)
- › Flange connection: 2 x Ø 15, 2 x Ø 31
- › Connection: G½...G1½
-8 SAE... -24 SAE
SAE 1¼...SAE 2
- › Filter kits: M65 x 1.5...M108 x 1.5
- › Block mounting / inline mounting / flange connection, optionally reverse flow function, clogging indicator electrical and / or optical.

Stainless Steel High Pressure Filters



HFL 155

Features

- › Nominal flow rate: up to 200 l/min (53 gpm)
- › Pressure: up to 630 bar (9137 psi)
- › Fineness: 10...60 µm(c)
- › Connection: G½...G1
- › In-line mounting, with optical clogging indicators. Other designs are available on request. Due to stainless steel suitable for almost all media and applications.

Filtration

Filling and Ventilating Filters & Desiccant Breathers



1 L1.0506; 2 LE.0817; 3 VFT-2500; 4 LT.1021

Features

- › Air flow: up to 850 l/min (225 gpm)
- › Oil flow: up to 140 l/min (37 gpm)
- › Fineness: 2 µm(c)
- › Connection: G $\frac{3}{4}$
-12 SAE... -20 SAE
 $\frac{3}{4}$ - 14 NPT
M18 x 1.5...M60 x 2
- › Regulation of pressure changes in the reservoir and oil level monitoring. Options: Double check valve, dipstick, "Vandalism proof" types.
Desiccant breathers additionally prevent the penetration of humidity into the tank.

Clogging Indicators



1 DG 062/DG 064; 2 DG 200; 3 DG 819; 4 DG 040/041

Manometers

- › Optical: green / red -0.25, 1.0 / 2.0 bar
(-3.6, 14.5 / 29 psi)

Pressure switches

- › Electrical:
Switching pressure -0.15, -0.25, 1.2...2.5 bar
(-2.18, -3.6, 17.4...36 psi)

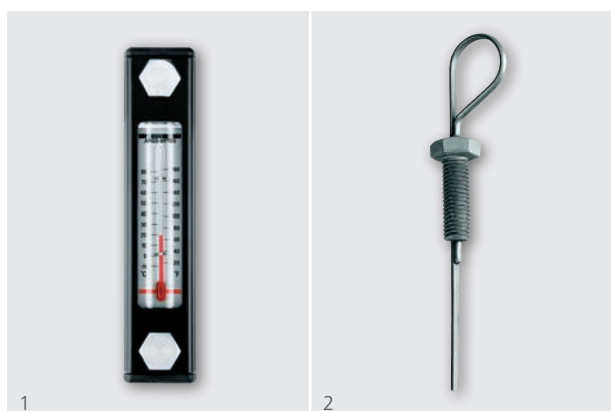
Differential pressure indicators

- › Optical: Response pressure 2...5 bar (29...73 psi)

Differential pressure switches

- › Electrical / optical
Switching pressure 1.2...5 bar (17.4...72.5 psi)
- › Monitors the clogging condition of suction, return, return-suction, pressure and high-pressure filters.

Oil Level Gauges with Thermometer & Oil Level Dipsticks



1 C5; 2 C4

Features Oil Level Gauges

- › Level range: 33...194 mm
(1.3...7.6 inch)
- › Temperature scale: -10...+80 °C (+14...+176 °F)
- › Indicates the oil level and the oil temperature in hydraulic oil or lubricant reservoirs.

Features Oil Level Dipsticks

- › Dipstick length: 100...640 mm
(3.94...25.2 inch)
- › Bolt thread: M10
- › Checks the oil level in hydraulic oil or lubricant reservoirs.

Customized Filter Solutions



1 E 077; 2 D 145; 3 E 599; 4 LS 250

Features

- › Customized filter and system solutions developed for special applications and designed in cooperation with our customers.

Filter Elements

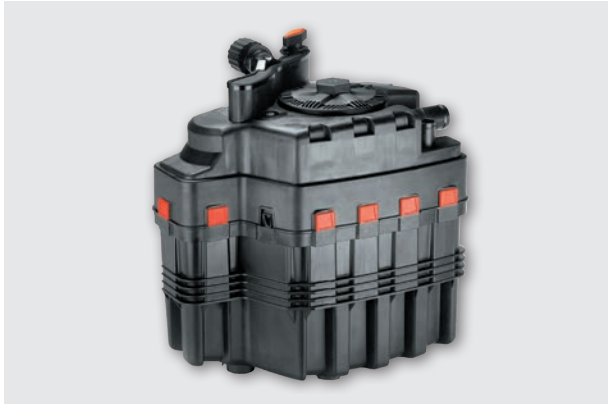


1 Paper Element; 2 EXAPOR®MAX 3; 3 Screen Element;
4 Custom Labeled Element

Features

- › Glass Fiber Elements
 - EXAPOR®MAX 3
 - EXAPOR®Light
 - EXAPOR®SPARK PROTECT
 - EXAPOR®AQUA
- › Paper Elements
- › Screen Elements
- › Polyester Elements
- › ReFit-Elements
 - in all available materials

Injection Molded Plastic Tanks



Injection Molded Tank

Features

- › Tank capacity: V_{\max} up to 60 l (16 gal)
- › Temperature: T_{\max} : -30 °C...+100 °C
(-22 °F...+212 °F)
Short-term up to +120 °C
(+248 °F)
- › Filter function: Return filter 10...30 µm(c)
Return-suction filter
10, 16 µm(c)
Suction filter 16...280 µm(c)
Ventilating filter 2 µm(c)
Filling filter 140...450 µm(c)
- › Customized design with integrated functions
- › Particularly attractive with large quantities required

HIT - Hybrid Integrated Tank®



Hybrid Tank

Features

- › Tank capacity: V_{\max} up to 150 l (40 gal)
- › Temperature: T_{\max} : -30°C...+100°C
(-22...+212 °F)
Short-term up to +120 °C
(+248 °F)
- › Filter function: Return filter 10...30 µm(c)
Return-suction filter
10, 16 µm(c)
Suction strainer 140...280 µm(c)
Ventilating filter 2 µm(c)
Filling filter 140...450 µm(c)
- › Customized design with integrated functions
- › Especially suitable for small quantities

Quick-Connect Hose Connection System



Quick-Connect System

Features

- › Temperature: T_{\max} : -30 °C...+100 °C
(-22 °F...+212 °F)
Short-term up to +120 °C
(+248 °F)
- › Pressure: up to 10 bar (14.5 psi)
- › Innovative hose connection technology
- › Assembly without any tools
- › Freely rotatable 360°

We make your products better. **Worldwide.**

ARGO
HYTOS
A Voith Company

Portable Particle Counters
Stationary Particle Monitors
Lubrication Condition Sensors
Data Handling
Software



Industry 4.0

Predictive Maintenance –

Enter the digital way of Condition Monitoring!

Portable Particle Counters



1 OPECom Portable Oil Lab; 2 OPCount

Features

- › The OPECom Portable Oil Lab is a mobile oil laboratory with which the oil cleanliness and the oil condition in hydraulic and lubrication systems can be measured quickly and easily.
- › The OPCount is a particle counter, designed for stationary or mobile operation. With its touch display and keypad it can be easily operated anywhere.

Stationary Particle Monitors



1 OPECom; 2 OPECom Phosphate Ester; 3 OPECom without Display; 4 OPCom FerroS

Features

- › The OPECom Particle Monitor is a compact particle monitor for continuous monitoring of the contamination in hydraulic fluids and lubricants.
- › Special variants are available - for monitoring aggressive fluids, such as phosphate ester, or a version without display for harsh conditions, among others.
- › The OPCom FerroS is an intelligent screw-in sensor to monitor ferromagnetic wear in hydraulic and lubrication systems.

Lubrication Condition Sensors



1 LubCos Level; 2 LubCos H₂O+ II

Features

- › Stationary screw-in sensor for the continuous determination of the oil condition, humidity and temperature in hydraulic and lubricating oils as well as for measuring the fluid level.

Sensors & Measurement

Data Handling



1 LubMon Connect; 2 LubMon Visu

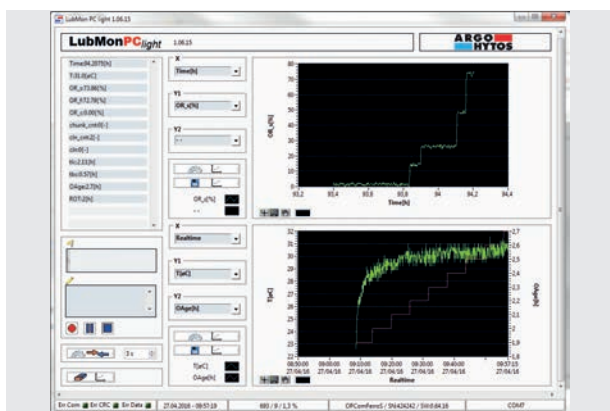
Features

- › The LubMon Connect is a remote gateway for connection of ARGO-HYTOS sensors via a CANopen interface. The data of the connected sensors are automatically transferred to a web database and can be displayed or exported via a website.

- › LubMon Visu is a display unit, suitable for panel-mounting, with integrated data memory for connection of various sensors. ARGO-HYTOS offers a wide range of compatible sensors for monitoring of hydraulic and lubricating fluids.

These are, amongst others, particle monitors, temperature, humidity and oil aging sensors.

Software



LubMon PCLight

Features

- › The software LubMon PCLight allows recording, storing and visualizing the incoming data from the condition sensors LubCos H₂O, LubCos H₂O+ II, LubCos Level, LubCos Vis+ and OPCOM Particle Monitor.

We make your products better. **Worldwide.**

ARGO
HYTOS
A Voith Company

Off-line Filters

Off-line Filters Units

Oil Service Units

Dewatering Units

Compact Filter Pack



Oil Services

Fluid Management –

Keep your oil clean and smooth!

Off-line Filters



1 FN 300; 2 FNS 040

Features

- › Nominal flow rate: up to 650 l/min (172 gpm)
(with flow control valve: up to 6 l/min (1.6 gpm))
- › Operating pressure: up to 12 bar (174 psi)
(with flow control valve: up to 350 bar (5100 psi))
- › Fineness: 3, 5, 10 µm(c)
- › Connection: G¼...G1, SAE 2½
- › Off-line filters for application in low pressure circuits or with flow control valve for connection to the high pressure line
- › Special variants on request

Off-line Filter Units



1 FNAPC 045; 2 FNA 008

Features

- › Nominal flow rate: up to 45 l/min (12 gpm)
- › Operating pressure: up to 6 bar (90 psi)
- › Viscosity range: up to 2000 mm²/s
- › Fineness: 3, 5, 10 µm(c)
- › Electric motor types: 1~110 V (50...60 Hz)
1~230 V (50...60 Hz)
3~400 V / 460 V (50...60 Hz)
24 V DC
- › Connection: up to G1¼
- › For first fit or for retrofitting in existing systems
- › Optionally with particle monitor and oil condition sensor

Oil Service Units

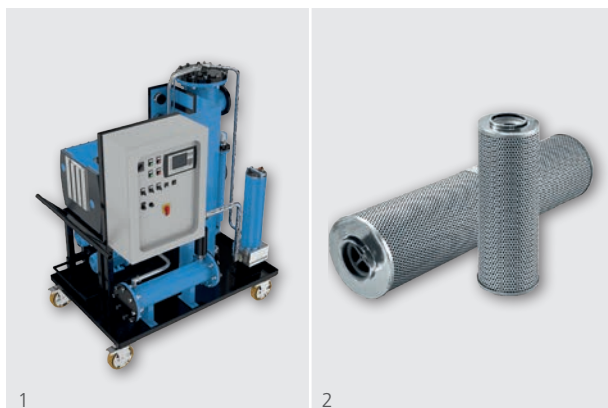


1 FAPC2; 2 UMPC2

Features

- › Nominal flow rate: up to 70 l/min (18.5 gpm)
- › Operating pressure: up to 6 bar (90 psi)
- › Viscosity range: up to 5000 mm²/s
- › Fineness: 3, 5, 10, 16 µm(c)
- › Electric motor types: 1~110 V (50...60 Hz)
1~230 V (50...60 Hz)
3~400 V / 460 V (50...60 Hz)
24 V DC
- › Filter Units for cleaning in off-line filtration or for filling systems with ultra-fine filter elements
Optionally with particle monitor
- › Special variants on request

Dewatering Units



1 OPS 550; 2 Exapor AQUA

Features

- › Nominal flow rate: up to 50 l/min (13.2 gpm)
- › Operating pressure: up to 4 bar (60 psi)
- › Fineness: 3, 5, 10 µm(c)
- › With dewatering units, large quantities of free water can be removed from the oil.
The water content is constantly monitored with the water sensor LubCos H₂O+ II.

Water Absorbing Filter Elements

- › Small quantities of remaining water can be withdrawn by water absorbing filter elements. Water absorbing filter elements fit in standard versions of off-line filters and filter units.

Compact Filter Pack CFP 03 - exclusive solution for small tanks



1 CFP 03; 2 Suction-Return Set

Features

- › Ergonomic design
- › Ultralight and compact
- › Multi-purpose system
- › Simplifies servicing of small power packs
- › Nominal flow rate up to 4 l/min (1 gpm)
- › Working pressure 3.5 bar (50 psi)
- › Weight 9 kg
- › Filter fineness 5, 10, 16 µm
- › Electric motor with switch
- › Hydraulic hoses included
- › Additional adapter for servicing of tanks with only one available connecting port

International		
ARGO-HYTOS worldwide		
Benelux	ARGO-HYTOS B.V.	info.benelux@argo-hytos.com
Brazil	ARGO-HYTOS Fluid Power Systems Ltda.	info.br@argo-hytos.com
China	ARGO-HYTOS Fluid Power Systems	info.cn@argo-hytos.com
Czech Republic	ARGO-HYTOS s.r.o	info.cz@argo-hytos.com
	ARGO-HYTOS Protech s.r.o	info.protech@argo-hytos.com
France	ARGO-HYTOS SAS	info.fr@argo-hytos.com
Germany	ARGO-HYTOS GMBH	info.de@argo-hytos.com
Great Britain	ARGO-HYTOS Ltd.	info.uk@argo-hytos.com
Hong Kong	ARGO-HYTOS Hong Kong Ltd.	info.hk@argo-hytos.com
India	ARGO-HYTOS PVT. LTD.	info.in@argo-hytos.com
Italy	ARGO-HYTOS S.r.l.	info.it@argo-hytos.com
Poland	ARGO-HYTOS Polska spz o.o.	info.pl@argo-hytos.com
Sweden	ARGO-HYTOS Nordic AB	info.se@argo-hytos.com
Turkey	ARGO-HYTOS Hidrolik Ekip. San. ve Tic. Ltd. Şti.	info.tr@argo-hytos.com
USA	ARGO-HYTOS Inc.	info.us@argo-hytos.com

